



Flight Plan & Site Survey

Created using **RPAS Wilco®**

Operation Name:

Mission 01-27-2023

Pilot Name:

[REDACTED]

Pilot Certificate:

[REDACTED]

Flight Start:

January 27, 2023 2:45 PM

Flight End:

January 27, 2023 4:45 PM

Flight Area (Latitude):

52° 9' 7.67" N (52.152)

Flight Area (Longitude):

106° 22' 46.69" W (-106.38)

Altitude - Radius:

Alt: 600 ft - Rad: 926.0 m (0.5 nm)

Airspace:

UNCONTROLLED

FIR - Contact:

CZWG - 204-983-8338

Weather:

-12.6 Celsius - Partially cloudy

Please ensure you received all required authorizations prior to flight.

Disclaimer

This Site Survey was created using RPAS Wilco by AIM Robotics. The flight plan contained is intended only for RPAS flights on the date/time and location specified. The user accepts all responsibility for the accuracy and completeness of the information contained.

For the complete Terms & Conditions, see

<https://rpaswilco.com/#/tnc>

Included

Site Survey

Obstacles (if available)

Nearby Aerodromes

Canadian Aviation Regulations

GFA

Aerodrome Supplements

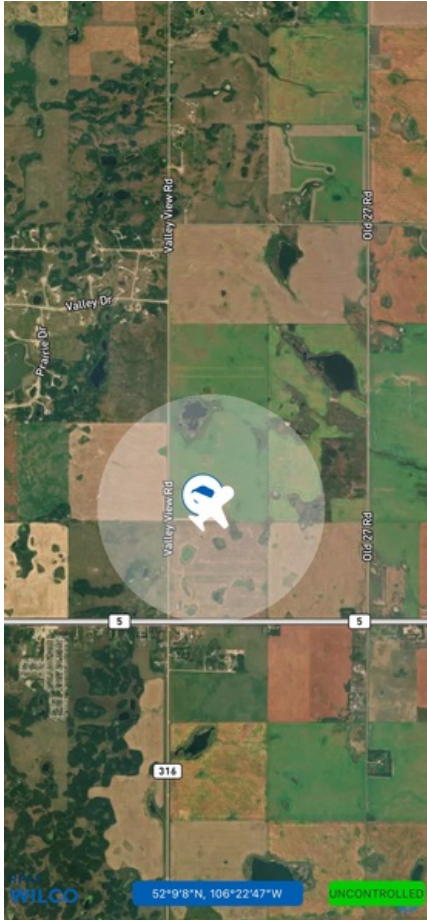
METAR & TAF (if available)

NOTAMs



CFS



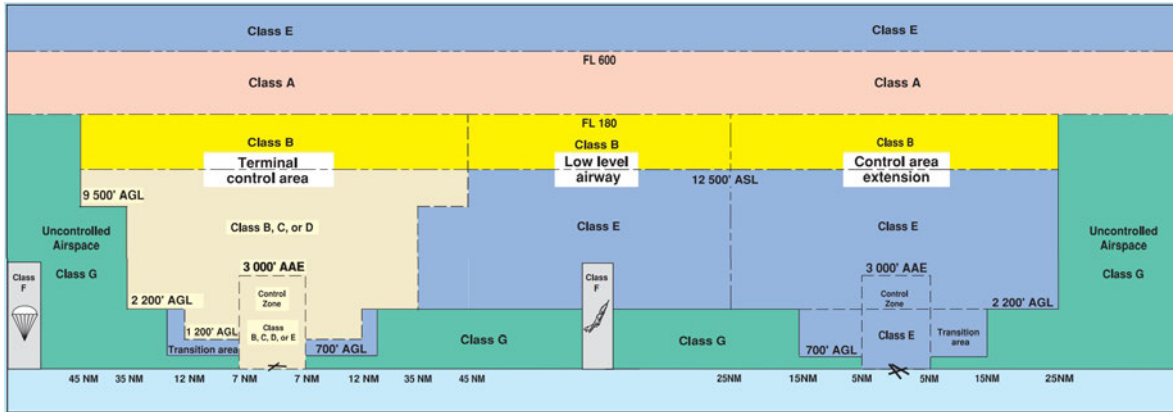
Flight Map



MAP Details

	Latitude	Longitude
 MODEL	52° 9' 7.67" N (52.152)	106° 22' 46.69" W (-106.38)
 Pilot	52° 9' 11.27" N (52.1531)	106° 22' 50.29" W (-106.3806)

Airspace Classification



Overlying Airspaces

Class	Name	Floor	Ceiling
E	Saskatoon/John G. Diefenbaker Intl, SK TA	700AGL	12500MSL
B	Saskatoon/John G. Diefenbaker Intl, SK TA	12500MSL	18000MSL
E	Saskatoon XPNDR MANDTRY	2900MSL	3900MSL
E	V302 Airway	2200AGL	12500MSL
B	V302 Airway	12500MSL	18000MSL
E	Saskatoon, SK CAE XPNDR MANDTRY	3900MSL	12500MSL
B	Saskatoon, SK CAE XPNDR MANDTRY	12500MSL	18000MSL

Nearest Aerodromes & Distance from Operation

BANGA AIR (CJN5 AERODROME Reg)	Lat: 52.001	Long: 106.463	17.744 KM	9.58 NM
SASKATOON (JIM PATTISON CHILDREN'S HOSPITAL) (CJP4 HELIPORT Cert)	Lat: 52.132	Long: 106.643	18.111 KM	9.78 NM
JOHN G. DIEFENBAKER INTL (CYXE AERODROME Cert)	Lat: 52.171	Long: 106.7	21.953 KM	11.85 NM
COMBINE WORLD FIELD (CEW2 AERODROME Reg)	Lat: 52.0	Long: 106.116	24.714 KM	13.34 NM

Weather Information for Mission Day

Summary: Partly cloudy throughout the day.

Condition	Temperature	Feels Like	Precipitation	Visibility	Cloud Coverage	Wind Speed	Humidity
Partially cloudy	12.6 Celsius	21.2 Celsius	3.0 %	18.8 Km	86.7 %	33.4 kph	77.1 %

Canadian Aviation Regulations

Division III — General Operating and Flight Rules

For full listing please visit <https://laws-lois.justice.gc.ca/eng/regulations/SOR-96-433/FullText.html#s-901.27>

Visual Line-of-sight

- **901.11 (1)** Subject to subsection (2) no pilot shall operate a remotely piloted aircraft system unless the pilot or a visual observer has the aircraft in visual line-of-sight at all times during flight.
- **(2)** A pilot may operate a remotely piloted aircraft system without the pilot or a visual observer having the aircraft in visual line-of-sight if the operation is conducted in accordance with a special flight operations certificate — RPAS issued under section 903.03.

Procedures

- **901.23 (1)** No pilot shall operate a remotely piloted aircraft system unless the following procedures are established:
 - **(a)** normal operating procedures, including pre-flight, take-off, launch, approach, landing and recovery procedures; and
 - **(b)** emergency procedures, including with respect to
 - **(i)** a control station failure,
 - **(ii)** an equipment failure,
 - **(iii)** a failure of the remotely piloted aircraft,
 - **(iv)** a loss of the command and control link,
 - **(v)** a fly-away, and
 - **(vi)** flight termination.
- **(2)** If the manufacturer of the remotely piloted aircraft system provides instructions with respect to the topics referred to in paragraphs (1)(a) and (b), the procedures established under subsection (1) shall reflect those instructions.
- **(3)** No pilot shall conduct the take-off or launch of a remotely piloted aircraft unless the procedures referred to in subsection (1) are reviewed before the flight by, and are immediately available to, each crew member.
- **(4)** No pilot shall operate a remotely piloted aircraft system unless the operation is conducted in accordance with the procedures referred to in subsection (1).

Site Survey

901.27 No pilot shall operate a remotely piloted aircraft system unless, before commencing operations, they determine that the site for take-off, launch, landing or recovery is suitable for the proposed operation by conducting a site survey that takes into account the following factors:

- **(a)** the boundaries of the area of operation;
- **(b)** the type of airspace and the applicable regulatory requirements;
- **(c)** the altitudes and routes to be used on the approach to and departure from the area of operation;
- **(d)** the proximity of manned aircraft operations;
- **(e)** the proximity of aerodromes, airports and heliports;
- **(f)** the location and height of obstacles, including wires, masts, buildings, cell phone towers and wind turbines;
- **(g)** the predominant weather and environmental conditions for the area of operation; and
- **(h)** the horizontal distances from persons not involved in the operation.

Operations at or in the Vicinity of an Aerodrome, Airport or Heliport

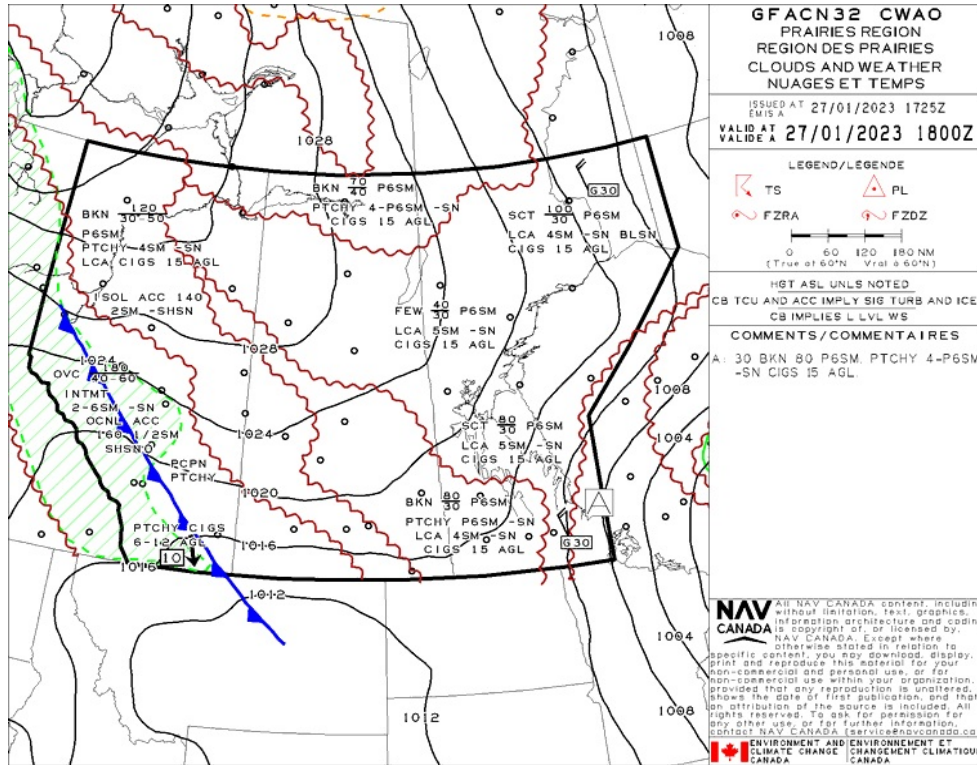
- **901.47 (1)** No pilot shall operate a remotely piloted aircraft at or near an aerodrome that is listed in the *Canada Flight Supplement* or the *Water Aerodrome Supplement* in a manner that could interfere with an aircraft operating in the established traffic pattern.
- **(2)** Subject to section 901.73 no pilot shall operate a remotely piloted aircraft at a distance of less than
 - **(a)** three nautical miles from the centre of an airport; and
 - **(b)** one nautical mile from the centre of a heliport.
- **(3)** No pilot shall operate a remotely piloted aircraft at a distance of less than three nautical miles from the centre of an aerodrome operated under the authority of the Minister of National Defence unless the operation is conducted in accordance with a special flight operations certificate — RPAS issued under section 903.03.

Records

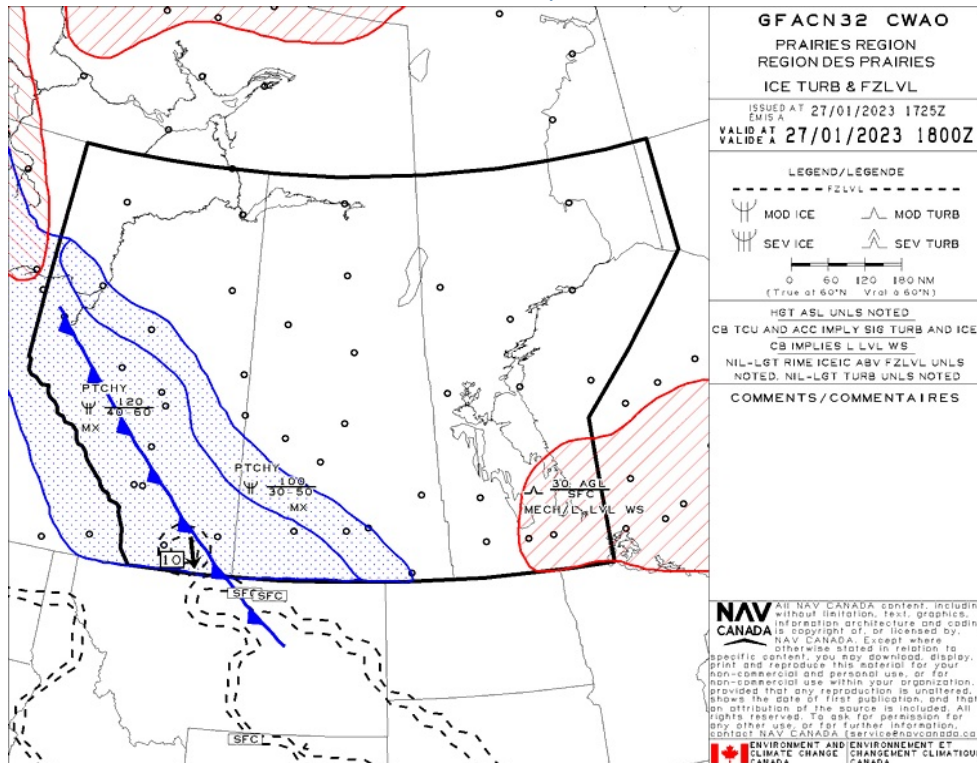
- **901.48 (1)** Every owner of a remotely piloted aircraft system shall keep the following records:
 - **(a)** a record containing the names of the pilots and other crew members who are involved in each flight and, in respect of the system, the time of each flight or series of flights and
 - **(b)** a record containing the particulars of any mandatory action and any other maintenance action, modification or repair performed on the system, including
 - **(i)** the names of the persons who performed them,
 - **(ii)** the dates they were undertaken,
 - **(iii)** in the case of a modification, the manufacturer, model and a description of the part or equipment installed to modify the system, and
 - **(iv)** if applicable any instructions provided to complete the work.
- **(2)** Every owner of a remotely piloted aircraft system shall ensure that the records referred to in subsection (1) are made available to the Minister on request and are retained for a period of
 - **(a)** in the case of the records referred to in paragraph (1)(a), 12 months after the day on which they are created; and
 - **(b)** in the case of the records referred to in paragraph (1)(b), 24 months after the day on which they are created.
- **(3)** Every owner of a remotely piloted aircraft system who transfers ownership of the system to another person shall, at the time of transfer, also deliver to that person all of the records referred to in paragraph (1)(b).



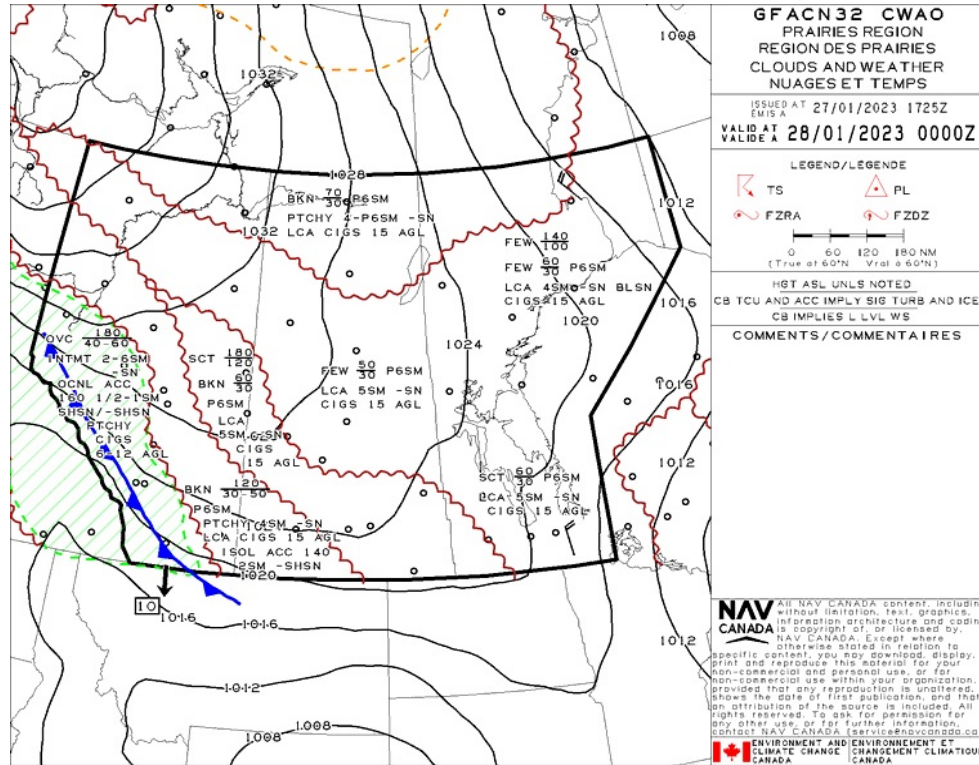
GFA Issue time + 00 hr - CLOUDS AND WEATHER



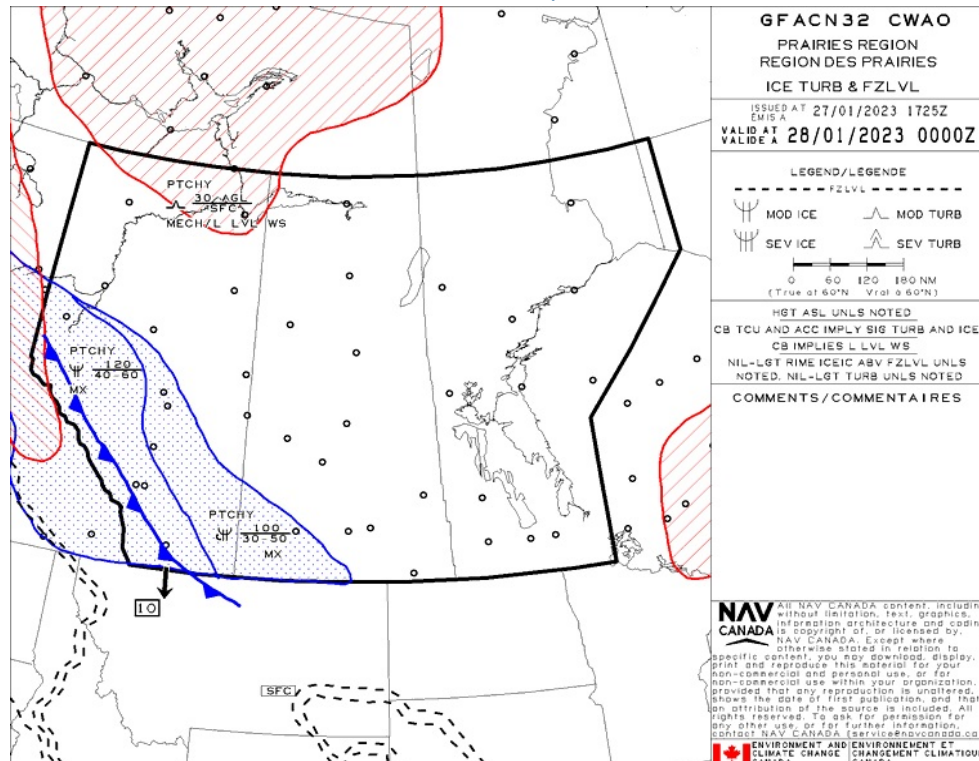
GFA Issue time + 00 hr - TURBULENCE, ICING AND FREEZING LEVEL



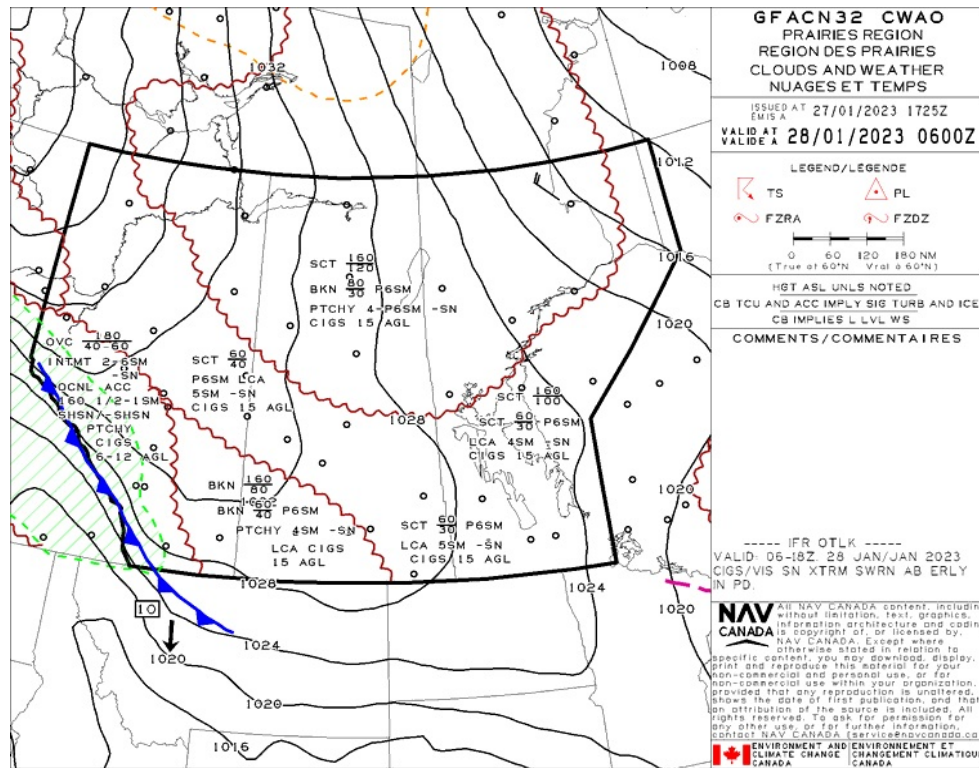
GFA Issue time + 06 hr - CLOUDS AND WEATHER



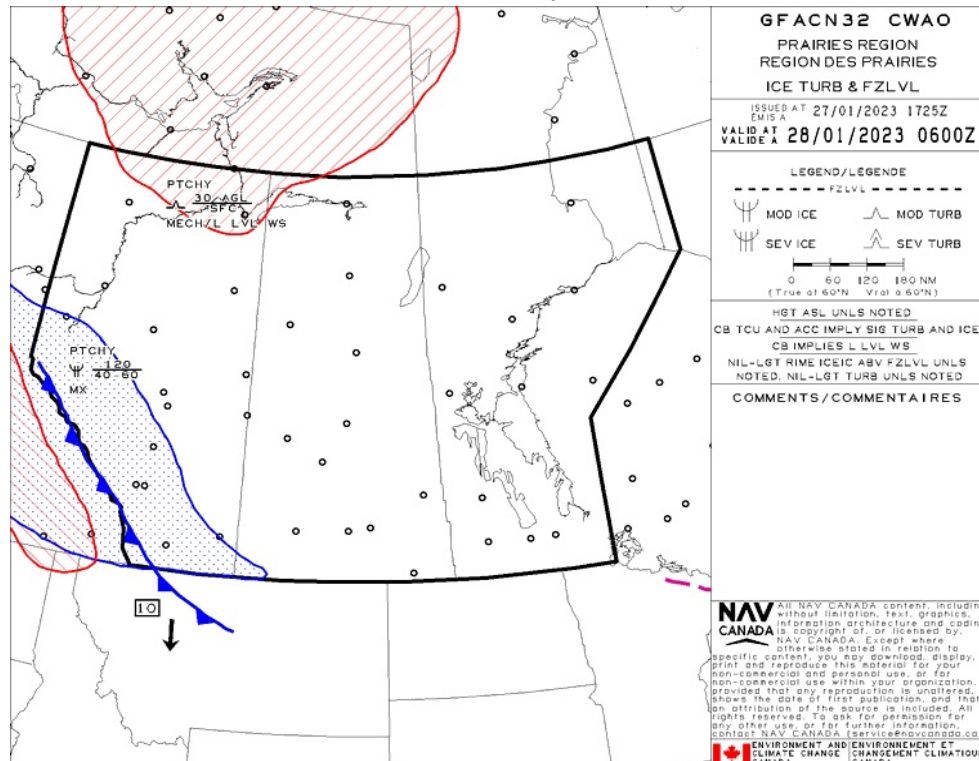
GFA Issue time + 06 hr - TURBULENCE, ICING AND FREEZING LEVEL



GFA Issue time + 12 hr - CLOUDS AND WEATHER



GFA Issue time + 12 hr - TURBULENCE, ICING AND FREEZING LEVEL



BANGA AIR - CJN5 - Reg

NOTAM

(M3428/22 NOTAMR M2763/22
Q) CZWG/QNNAS/IV/BO/AE/000/999/5211N10643W025
A) CYXE B) 2212231410 C) 2303172359
E) SASKATOON TACAN YXE 116.2MHZ/CH109X U/S)

(M0121/23 NOTAMR M0114/23
Q) CZWG/QNVAS/IV/BO/AE/000/999/5211N10643W025
A) CYXE B) 2301271706 C) 2302012359
E) SASKATOON VOR YXE 116.2MHZ U/S)

(G0033/23 NOTAMR G2417/22
Q) CZXX/QOECH/IV/NB0/E/000/999/5518N09358W999
A) CZWG CZYZ B) 2301111838 C) 2304121800EST
E) A ACFT, REGARD ESS OF THE STATE OF REGISTRY, DIRECT Y OR
INDIRECT Y OWNED, CHARTERED, EASED, OPERATED OR OTHERWISE
CONTRO ED BY A PERSON CONNECTED WITH EITHER THE RUSSIAN
FEDERATION OR OF BE ARUS OR BY A CORPORATION OR ENTITY THAT IS
INCORPORATED OR FORMED UNDER THE AWS OF THE RUSSIAN FEDERATION
OR BE ARUS, AND A OPERATORS HO DING AN AIR OPERATOR CERTIFICATE
(AOC) ISSUED BY RUSSIAN FEDERATION AND/OR BE ARUSIAN AUTHORITIES
ARE PROHIBITED TO ENTER, EXIT OR OVERF Y CANADA'S TERRITORIA
AIRSPACE (INC UDIING F T WITHIN 12NM OF CANADA'S COASTS).
EXCEPTIONS PERMITTED FOR ACFT EXPERIENCING INF IGH T EMERG.

A AUTH OBTAINED PRIOR TO 27 FEB 2022 FOR ACFT AND OPS SUBJECT
TO THIS NOTAM ARE REVOKED.

HUMANITARIAN, SAR, MEDEVAC AND ANY OTHER F T SEEKING AN EXCEPTION
TO THIS RESTRICTION MUST RECEIVE AUTH GRANTED AFTER 27 FEB 2022
FM THE MINISTER OF TRANSPORT TO OPERATE IN CANADA'S TERRITORIA
AIRSPACE. AFFECTED ACFT WISHING TO OBTAIN SUCH AN AUTH OR C R
INTO CANADA'S TERRITORIA AIRSPACE MAY APP Y TO THE MINISTER OF
TRANSPORT AT 1-877-992-6853 OR 1-613-992-6853 OR BY EMAI AT
OPERATIONS.AVIATION(AT)TC.GC.CA.)

(G0091/23 NOTAMN
Q) CZWG/QXX W/IV/BO/E/000/999/5000N09150W999
A) CZWG B) 2301272100 C) 2301280300
E) DUE TO REDUCED SYSTEM CAPACITY AND ANTICIPATED TFC DEMANDS,
IFR ACFT DEP/ARR CYQK, CYX , CYR , CYHD, AND CYGQ EXPECT
D A UP TO 15MIN AND IFR TRAINING F T NOT AUTH AT THESE AD.
CTC 204-983-8338 FOR INFO.)

SASKATOON (JIM PATTISON CHILDREN'S HOSPITAL) - CJP4 - Cert

NOTAM

(J0157/23 NOTAMR J6873/22
Q) CZWG/QMRXX/IV/NB0/A/000/999/5210N10642W005
A) CYXE B) 2301101628 C) 2304110100
E) RWY 09/27 NON STANDARD MARKINGS)

(G0033/23 NOTAMR G2417/22
Q) CZXX/QOECH/IV/NB0/E/000/999/5518N09358W999
A) CZWG CZYZ B) 2301111838 C) 2304121800EST
E) A ACFT, REGARD ESS OF THE STATE OF REGISTRY, DIRECT Y OR INDIRECT Y OWNED, CHARTERED, EASED, OPERATED OR OTHERWISE CONTROLLED BY A PERSON CONNECTED WITH EITHER THE RUSSIAN FEDERATION OR OF BE ARUS OR BY A CORPORATION OR ENTITY THAT IS INCORPORATED OR FORMED UNDER THE LAWS OF THE RUSSIAN FEDERATION OR BE ARUS, AND A OPERATORS HOLDING AN AIR OPERATOR CERTIFICATE (AOC) ISSUED BY RUSSIAN FEDERATION AND/OR BE ARUSIAN AUTHORITIES ARE PROHIBITED TO ENTER, EXIT OR OVERFLY CANADA'S TERRITORIAL AIRSPACE (INCLUDING F T WITHIN 12NM OF CANADA'S COASTS). EXCEPTIONS PERMITTED FOR ACFT EXPERIENCING IMMEDIATE EMERG.

A AUTH OBTAINED PRIOR TO 27 FEB 2022 FOR ACFT AND OPS SUBJECT TO THIS NOTAM ARE REVOKED.

HUMANITARIAN, SAR, MEDEVAC AND ANY OTHER F T SEEKING AN EXCEPTION TO THIS RESTRICTION MUST RECEIVE AUTH GRANTED AFTER 27 FEB 2022 FROM THE MINISTER OF TRANSPORT TO OPERATE IN CANADA'S TERRITORIAL AIRSPACE. AFFECTED ACFT WISHING TO OBTAIN SUCH AN AUTH OR C R INTO CANADA'S TERRITORIAL AIRSPACE MAY APPLY TO THE MINISTER OF TRANSPORT AT 1-877-992-6853 OR 1-613-992-6853 OR BY EMAIL AT OPERATIONS.AVIATION(AT)TC.GC.CA.)

(U0044/23 NOTAMR U1328/22
Q) CZWG/Q0 AS/IV/M/AE/000/018/5210N10642W005
A) CYXE B) 2301061548 C) 2304062359
E) OBST GT U/S TOWER 521011N 1064227W (APRX 1749FT WSW AD) 113FT AG , 1758FT AMS .)

(G0091/23 NOTAMR
Q) CZWG/QXX W/IV/BO/E/000/999/5000N09150W999
A) CZWG B) 2301272100 C) 2301280300
E) DUE TO REDUCED SYSTEM CAPACITY AND ANTICIPATED TFC DEMANDS, IFR ACFT DEP/ARR CYQK, CYX , CYR , CYHD, AND CYGQ EXPECT D A UP TO 15MIN AND IFR TRAINING F T NOT AUTH AT THESE AD. CTC 204-983-8338 FOR INFO.)

(J0451/23 NOTAMR
Q) CZWG/Q0BCE/IV/M/AE/000/018/5212N10642W005
A) CYXE B) 2301241400 C) 2302172300
D) DAI Y 1400-2300
E) MU TIP E CRANES WITHIN 212FT RADIUS CENTRED ON 521137N 1064224W APRX 5120FT BFR THR 15 AND 1530FT NE EXTENDED RC . 115FT AG 1765FT AMS . NOT GTD, NOT PAINTED.)

(M0121/23 NOTAMR M0114/23
Q) CZWG/QNVAS/IV/BO/AE/000/999/5211N10643W025
A) CYXE B) 2301271706 C) 2302012359
E) SASKATOON VOR YXE 116.2MHZ U/S)

(M3428/22 NOTAMR M2763/22
Q) CZWG/QNNAS/IV/BO/AE/000/999/5211N10643W025
A) CYXE B) 2212231410 C) 2303172359
E) SASKATOON TACAN YXE 116.2MHZ/CH109X U/S)

JOHN G. DIEFENBAKER INTL - CYXE - Cert

METAR

METAR CYXE 272000Z 35013KT 15SM -SN BKN021 BKN250 M14/M19
A3004 RMK SC5CI2 SLP2 =

METAR	LOCATION CYXE - SASKATOON/JOHN G. DIEFENBAKER INTL/	DATE - TIME 27 JANUARY 2023 - 2000 UTC
WIND 350 TRUE @ 13 KNOTS	VISIBILITY 15 STAT. MILES	RUNWAY VISUAL RANGE
WEATHER LIGHT SNOW	CLOUDINESS BROKEN CLOUDS (5/8 - 7/8) 2100 FT BROKEN CLOUDS (5/8 - 7/8) 25000 FT	TEMP / DEWPOINT -14 C / -19 C
ALTIMETER 30.04 IN HG	RECENT WEATHER	WIND SHEAR

METAR CYXE 271900Z 35011KT 15SM -SN DRSN OVC020 M14/M18
A3002 RMK SC8 SLP209=

METAR	LOCATION CYXE - SASKATOON/JOHN G. DIEFENBAKER INTL/	DATE - TIME 27 JANUARY 2023 - 1900 UTC
WIND 350 TRUE @ 11 KNOTS	VISIBILITY 15 STAT. MILES	RUNWAY VISUAL RANGE
WEATHER LIGHT SNOW DRIFTING SNOW	CLOUDINESS OVERCAST 2000 FT	TEMP / DEWPOINT -14 C / -18 C
ALTIMETER 30.02 IN HG	RECENT WEATHER	WIND SHEAR

METAR CYXE 271800Z 01014KT 15SM -SN DRSN OVC021 M14/M18
A3000 RMK SC8 SLP200=

METAR	LOCATION CYXE - SASKATOON/JOHN G. DIEFENBAKER INTL/	DATE - TIME 27 JANUARY 2023 - 1800 UTC
WIND 10 TRUE @ 14 KNOTS	VISIBILITY 15 STAT. MILES	RUNWAY VISUAL RANGE
WEATHER LIGHT SNOW DRIFTING SNOW	CLOUDINESS OVERCAST 2100 FT	TEMP / DEWPOINT -14 C / -18 C
ALTIMETER 30.00 IN HG	RECENT WEATHER	WIND SHEAR

TAF

TAF CYXE 271740Z 2718/2818 36015KT P6SM -SN OVC020 TEMPO 2718/2724 P6SM NSW SCT020 BKN120 FM280000 36010KT P6SM SCT020 BKN120 TEMPO 2800/2804 BKN020 BKN120 FM280400 32008KT P6SM SCT020 RMK NXT FCST BY 280000Z=				
TAF		LOCATION CYXE - SASKATOON/JOHN G. DIEFENBAKER INTL/SK		VALIDITY [UTC] 27 JAN - 1740 to 28 JAN - 1800
TIMES [UTC]	WIND [DEGREES TRUE]	VISIBILITY [STAT. MILES]	WEATHER	CLOUDINESS [FEET AGL]
27 JAN - 1800 to 28 JAN - 0000	360 @ 15 KNOTS	6+	LIGHT SNOW	2000 OVERCAST
TEMPORARY CHANGES 27 JAN - 1800 to 28 JAN - 0000		6+	NIL	2000 SCATTERED 12000 BROKEN
28 JAN - 0000 to 28 JAN - 0400	360 @ 10 KNOTS	6+	NIL	2000 SCATTERED 12000 BROKEN
TEMPORARY CHANGES 28 JAN - 0000 to 28 JAN - 0400				2000 BROKEN 12000 BROKEN
28 JAN - 0400 to 28 JAN - 1800	320 @ 8 KNOTS	6+	NIL	2000 SCATTERED
REMARKS				

NOTAM

(M3428/22 NOTAMR M2763/22
Q) CZWG/QNNAS/IV/BO/AE/000/999/5211N10643W025
A) CYXE B) 2212231410 C) 2303172359
E) SASKATOON TACAN YXE 116.2MHZ/CH109X U/S)

(J0157/23 NOTAMR J6873/22
Q) CZWG/QMRXX/IV/NBO/A/000/999/5210N10642W005
A) CYXE B) 2301101628 C) 2304110100
E) RWY 09/27 NON STANDARD MARKINGS)

(G0033/23 NOTAMR G2417/22
Q) CZXX/QOEC/IV/NBO/E/000/999/5518N09358W999
A) CZWG CZYZ B) 2301111838 C) 2304121800EST
E) A ACFT, REGARD ESS OF THE STATE OF REGISTRY, DIRECT Y OR INDIRECT Y OWNED, CHARTERED, EASED, OPERATED OR OTHERWISE CONTROLLED BY A PERSON CONNECTED WITH EITHER THE RUSSIAN

FEDERATION OR OF BE ARUS OR BY A CORPORATION OR ENTITY THAT IS INCORPORATED OR FORMED UNDER THE AWS OF THE RUSSIAN FEDERATION OR BE ARUS, AND A OPERATORS HO DING AN AIR OPERATOR CERTIFICATE (AOC) ISSUED BY RUSSIAN FEDERATION AND/OR BE ARUSIAN AUTHORITIES ARE PROHIBITED TO ENTER, EXIT OR OVERF Y CANADA'S TERRITORIA AIRSPACE (INC UDING F T WITHIN 12NM OF CANADA'S COASTS). EXCEPTIONS PERMITTED FOR ACFT EXPERIENCING INF IGH T EMERG.

A AUTH OBTAINED PRIOR TO 27 FEB 2022 FOR ACFT AND OPS SUBJECT TO THIS NOTAM ARE REVOKED.

HUMANITARIAN, SAR, MEDEVAC AND ANY OTHER F T SEEKING AN EXCEPTION TO THIS RESTRICTION MUST RECEIVE AUTH GRANTED AFTER 27 FEB 2022 FM THE MINISTER OF TRANSPORT TO OPERATE IN CANADA'S TERRITORIA AIRSPACE. AFFECTED ACFT WISHING TO OBTAIN SUCH AN AUTH OR C R INTO CANADA'S TERRITORIA AIRSPACE MAY APP Y TO THE MINISTER OF TRANSPORT AT 1-877-992-6853 OR 1-613-992-6853 OR BY EMAI AT OPERATIONS.AVIATION(AT)TC.GC.CA.)

(A3420/23 NOTAMR A3319/23
Q) CZWG/QFAXX/IV/NB0/A/000/999/5210N10642W005
A) CYXE B) 2301271400 C) 2301272200
E) RSC 09 6/6/6 DRY, DRY, DRY. 140FT WIDTH. REMAINING WIDTH COMPACTED SNOW. VA ID JAN 27 1337 - JAN 27 2137.

RSC 27 6/6/6 DRY, DRY, DRY. 140FT WIDTH. REMAINING WIDTH COMPACTED SNOW. VA ID JAN 27 1337 - JAN 27 2137.

RSC 15 6/6/6 DRY, DRY, DRY. VA ID JAN 27 1330 - JAN 27 2130.

RSC 33 6/6/6 DRY, DRY, DRY. VA ID JAN 27 1330 - JAN 27 2130.

ADDN NON-GRF/TA PA INFO:

RMK: TWY TWY A PHA, BRAVO, CHAR IE, FOXTROT, 202301271340, DRY. PATCHY CONTAMINANT.

RMK: APN APN APRON I, APRON II, APRON III, APRON IV, APRON V, APRON VI, APRON VII, DE-ICING BAY, 202301271355, DRY. PATCHY CONTAMINANT.)

(U0044/23 NOTAMR U1328/22
Q) CZWG/Q0 AS/IV/M/AE/000/018/5210N10642W005
A) CYXE B) 2301061548 C) 2304062359
E) OBST GT U/S TOWER 521011N 1064227W (APRX 1749FT WSW AD) 113FT AG , 1758FT AMS .)

(G0091/23 NOTAMN
Q) CZWG/QXX W/IV/B0/E/000/999/5000N09150W999
A) CZWG B) 2301272100 C) 2301280300
E) DUE TO REDUCED SYSTEM CAPACITY AND ANTICIPATED TFC DEMANDS, IFR ACFT DEP/ARR CYQK, CYX , CYR , CYHD, AND CYGQ EXPECT D A UP TO 15MIN AND IFR TRAINING F T NOT AUTH AT THESE AD. CTC 204-983-8338 FOR INFO.)

(J0451/23 NOTAMN
Q) CZWG/Q0BCE/IV/M/AE/000/018/5212N10642W005
A) CYXE B) 2301241400 C) 2302172300
D) DAI Y 1400-2300
E) MU TIP E CRANES WITHIN 212FT RADIUS CENTRED ON 521137N 1064224W APRX 5120FT BFR THR 15 AND 1530FT NE EXTENDED RC . 115FT AG 1765FT AMS . NOT GTD, NOT PAINTED.)

(M0121/23 NOTAMR M0114/23
Q) CZWG/QNVAS/IV/B0/AE/000/999/5211N10643W025
A) CYXE B) 2301271700 C) 2302012359
E) SASKATOON VOR YXE 116.2MHZ U/S)

COMBINE WORLD FIELD - CEW2 - Reg

NOTAM

(M3428/22 NOTAMR M2763/22
Q) CZWG/QNNAS/IV/BO/AE/000/999/5211N10643W025
A) CYXE B) 2212231410 C) 2303172359
E) SASKATOON TACAN YXE 116.2MHZ/CH109X U/S)

(M0121/23 NOTAMR M0114/23
Q) CZWG/QNVAS/IV/BO/AE/000/999/5211N10643W025
A) CYXE B) 2301271706 C) 2302012359
E) SASKATOON VOR YXE 116.2MHZ U/S)

(G0033/23 NOTAMR G2417/22
Q) CZXX/QOECH/IV/NB0/E/000/999/5518N09358W999
A) CZWG CZYZ B) 2301111838 C) 2304121800EST
E) A ACFT, REGARD ESS OF THE STATE OF REGISTRY, DIRECT Y OR
INDIRECT Y OWNED, CHARTERED, EASED, OPERATED OR OTHERWISE
CONTRO ED BY A PERSON CONNECTED WITH EITHER THE RUSSIAN
FEDERATION OR OF BE ARUS OR BY A CORPORATION OR ENTITY THAT IS
INCORPORATED OR FORMED UNDER THE AWS OF THE RUSSIAN FEDERATION
OR BE ARUS, AND A OPERATORS HO DING AN AIR OPERATOR CERTIFICATE
(AOC) ISSUED BY RUSSIAN FEDERATION AND/OR BE ARUSIAN AUTHORITIES
ARE PROHIBITED TO ENTER, EXIT OR OVERF Y CANADA'S TERRITORIA
AIRSPACE (INC UDIING F T WITHIN 12NM OF CANADA'S COASTS).
EXCEPTIONS PERMITTED FOR ACFT EXPERIENCING INF IGH T EMERG.

A AUTH OBTAINED PRIOR TO 27 FEB 2022 FOR ACFT AND OPS SUBJECT
TO THIS NOTAM ARE REVOKED.

HUMANITARIAN, SAR, MEDEVAC AND ANY OTHER F T SEEKING AN EXCEPTION
TO THIS RESTRICTION MUST RECEIVE AUTH GRANTED AFTER 27 FEB 2022
FM THE MINISTER OF TRANSPORT TO OPERATE IN CANADA'S TERRITORIA
AIRSPACE. AFFECTED ACFT WISHING TO OBTAIN SUCH AN AUTH OR C R
INTO CANADA'S TERRITORIA AIRSPACE MAY APP Y TO THE MINISTER OF
TRANSPORT AT 1-877-992-6853 OR 1-613-992-6853 OR BY EMAI AT
OPERATIONS.AVIATION(AT)TC.GC.CA.)

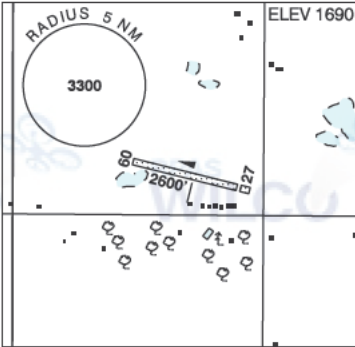
(G0091/23 NOTAMN
Q) CZWG/QXX W/IV/BO/E/000/999/5000N09150W999
A) CZWG B) 2301272100 C) 2301280300
E) DUE TO REDUCED SYSTEM CAPACITY AND ANTICIPATED TFC DEMANDS,
IFR ACFT DEP/ARR CYQK, CYX , CYR , CYHD, AND CYGQ EXPECT
D A UP TO 15MIN AND IFR TRAINING F T NOT AUTH AT THESE AD.
CTC 204-983-8338 FOR INFO.)

SASKATCHEWAN

AERODROME/FACILITY DIRECTORY

SASKATOON / BANGA AIR SK

CJN5

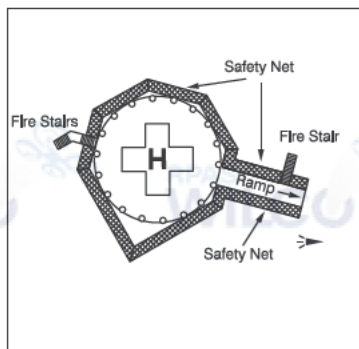
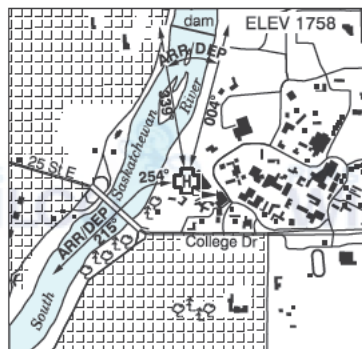
REF	N52 00 02 W106 27 45 10SE 11°E (2012) UTC-6 Elev 1690' A5006 A5015		ELEV 1690'
OPR	Banga International Air Ltd 306-612-1227 Reg PPR		
PF	C-1,2,5 D-3,4,6		
FLT PLN	FIC Edmonton 866-WXBRIEF (Toll free within Canada) or 866-541-4102 (Toll free within Canada & USA)		
RWY DATA	Rwy 09(093°)/27(273°) 2600x70 earth Thld 27 displ 200'		
RCR	Opr No win maint		
COMM	ATF tfc 122.8 5NM 4700 ASL		
NAV	VORTAC SASKATOON YXE 116.2 Ch 109 N52 10 52 W106 43 11		
PRO	Circuit hgt 2400 ASL. Apt in close proximity to Saskatoon Class E airspace, see VNC. For flt info ctc TWR 118.3.		
CAUTION	Extv ultra-light & NORDO acft in vic		

SASKATCHEWAN

AERODROME/FACILITY DIRECTORY

SASKATOON (JIM PATTISON CHILDREN'S HOSPITAL) SK (Heli)

CJP4



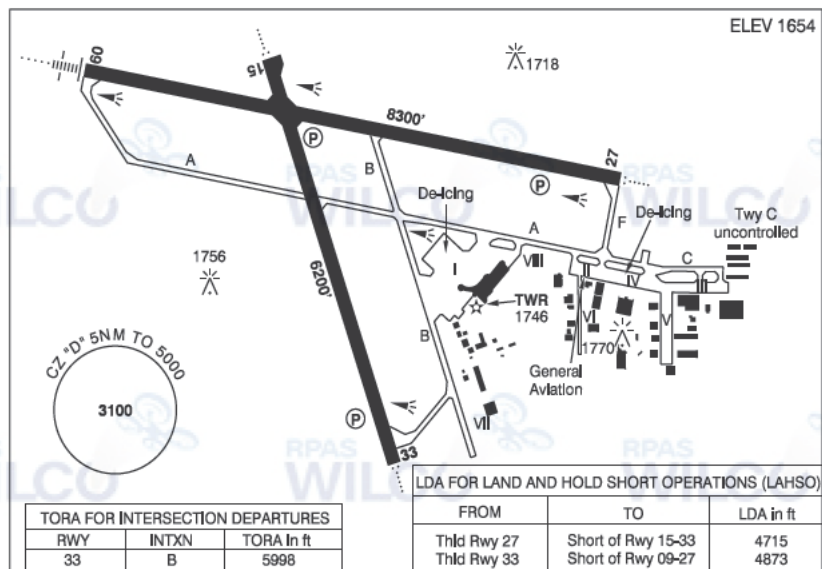
REF	N52 07 55 W106 38 33 Adj E 11°E (2013) UTC-6 Elev 1758' A5006 A5015
OPR	Saskatchewan Health Authority 306-655-0683 Cert PPR
PF	A-1,2,4,7,8 C-3,5,6
FLT PLN	
FIC	Edmonton 866-WXBRIEF (Toll free within Canada) or 866-541-4102 (Toll free within Canada & USA)
HELI DATA	FATO 86' dia non-supporting TLOF 57' dia CONC Safety Area 115' dia 17,000 lbs Max heli overall length 57.4'
RCR	Support services 306-844-1601
LIGHTING	RY (LO) yellow LED
COMM	
RCO	Edmonton rdo 122.375 (FISE) 126.7 (bcst)
MF	rdo 118.3 (E) See Saskatoon/John G. Diefenbaker Intl MF for details.
PRO	Arr/dep 339° to 004° fr heli, slope 8% (H3), day/night use. Arr/dep 254° to 215° curved fr heli, slope 8% (H3), day/night use.
CAUTION	Lgtd hosp elevator penthouse aprx 69' W of heli. Lgtd hosp signage on the N bldg wall BLW heli elev.

SASKATCHEWAN

AERODROME/FACILITY DIRECTORY

SASKATOON / JOHN G. DIFENBAKER INTL SK

CYXE



REF	N52 10 15 W106 42 00 3NW 11°E (2013) UTC-6 Elev 1654' A5006 A5015 LO2 HI3 T1 CAP
OPR	Saskatoon Aprt Authority 306-975-4013 H24 Cert
PF	A-1,2,3,6,7 avbl 1230-0630Z C-4,5
CUST	AOE/200 (300 with staged off-loading) 888-226-7277 14-06Z May 6-Nov 5, 14-06Z Nov 6-Dec 3 O/T O/R, H24 Dec 4-May 5
FLT PLN	
FIC	Edmonton 866-WXBRIEF (Toll free within Canada) or 866-541-4102 (Toll free within Canada & USA)
WX	METAR H24.
DUAT	TAF H24, issue times: 00, 06, 12, 18Z. Saskatoon Aerocentre.
SERVICES	Call out chg may be levied for one or more svcs.
FUEL	100LL, JA-1
OIL	All
S	1,2,3,4,5,6
ARFF	DESIGNATED CAT 6 (CAT 7 30 min PN). Discrete emerg freq 122.675
SUP FL	LHOX D & A-ice
JASU	CE16
PVT ADV	Kreos Aviation/Shell 122.95 12-04Z; Lockhart Aviation/World Fuel 122.85 12-04Z
MIL CON	Depmar Flight Holdings Inc (Shell) 306-931-8552

SASKATCHEWAN

AERODROME / FACILITY DIRECTORY

SASKATOON / JOHN G. DIEFENBAKER INTL SK (Cont'd)

CYXE

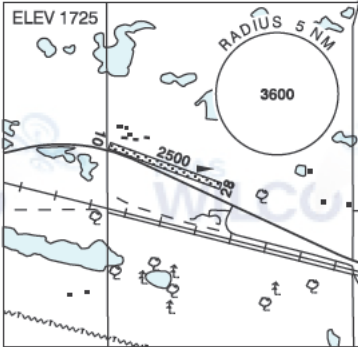
RWY DATA	Rwy 09(090°)/27(270°) 8300x148 ASPH Rwy 15(150°)/33(330°) 6200x148 ASPH RESA: All Rwys 492'
RWY CERT	Rwy 09 RVR 1200(1/4sm)/Rwy 27 RVR 1200(1/4sm) AGN IIIB Rwy 15 RVR 1200(1/4sm)/Rwy 33 RVR 1200(1/4sm) AGN IIIB
TWY	Twy A and Twy C discretionary oversteer rqrd for all acft at intxn of Twy A and Apron II, intxn of Twy A/C and Apron IV, intxn of Twy C and Apron III. Twy C uncontrolled. Twy B adj to Apron I uncontrolled.
APRON	A310, A330, B757 & B767: 120° turns at intxn Twy B & A proh. Prkg Apron I rstd to scheduled & non-scheduled airline tfc. 2 hr PN for gate assignment on Apron I, ctc opr. All other itinerant acft must park on Apron II. Apron VIII rstd to scheduled & non-scheduled airline tfc. 2 hr PN for gate assignment on Apron VIII, ctc opr
RCR	Opr or 306-975-4328 CRFI, PLR/PCN
LIGHTING	09-AN(TE HI), 27-AO(TE HI) P2, 15-AO(TE HI) P2, 33-AO(TE HI) P2. Nominal touchdown pt P2 Rwy 15 aprx 1200' S of thld Rwy 15.
COMM	RCO ATIS GND Edmonton rdo 122.375 (FISE) 126.7 (bcst) 128.4 Saskatoon 121.9 1200-0445Z Mon-Fri Mar 09-Oct 31, 1245-0445Z Sat-Sun Mar 09-Oct 31, 1245-0445Z Nov 1- Mar 8 TWR Saskatoon 118.3 (E) 1200-0445Z Mon-Fri Mar 09-Oct 31, 1245-0445Z Sat-Sun Mar 09-Oct 31, 1245-0445Z Nov 1- Mar 8 (emerg only 306-665-4249) MF rdo 118.3 (E) 0445-1200Z Mon-Fri Mar 09-Oct 31, 0445-1245Z Sat-Sun Mar 09-Oct 31, 0445-1245Z Nov 1- Mar 8 5NM 5000 ASL (CAR 602.98) (emerg only 306-665-4249) ARR DEP PAL Saskatoon 119.9 Saskatoon 119.9 Winnipeg Ctr 134.325
NAV	NDB XE 257 (L) N52 11 23 W106 48 50 YELLOWHEAD ZSS 397 (L) N52 14 30 W106 44 27 VORTAC ILS YXE 116.2 Ch 109 N52 10 52 W106 43 11 (1700') IST 109.9 (Rwy 09) RVR LOC reliable only wi hin 10° either side of centreline.
PRO	Rgt hand circuits Rwys 15 & 27 (CAR 602 96). Arr/dep as depicted on VTPC to/fr CYA 306T. Reduced Visibility Procedures (RVR less than 2600 to 1200 ft): See CAP ATS PPR REQUIREMENTS: Ctc Winnipeg ACC 204-984-5979 for the following; - IFR tng and photo survey within Saskatoon Class E Transponder Airspace
CAUTION	Random radiosonde &/or heavy balloon launches aprx 15 NM SW, at abandoned A/D Vanscoy. Ocsl parajump activity within 1NM of Martensville (N52 16 50 W106 41 08, 6.6NM N apt), daylight hrs activated by NOTAM. Max alt 11,600 ASL.

SASKATCHEWAN

AERODROME / FACILITY DIRECTORY

ELSTOW / COMBINE WORLD FIELD SK

CEW2

REF	N52 00 01 W106 06 58 2.3W 10°E (2019) UTC-6 Elev 1725' A5006 A5015		
OPR	Charlie Smith 306-221-3800 Reg PPR		
PF	D-1,2,3,4,5,6		
FLT PLN	FIC Edmonton 866-WXBRIEF (Toll free within Canada) or 866-541-4102 (Toll free within Canada & USA)		
SERVICES			
S	7		
RWY DATA	Rwy 10(100°)/28(280°) 2500x60 TURF		
RCR	Opr Ltd win maint		
COMM	ATF tfc 123.2 5NM 5000 ASL		
CAUTION			
	Unlgtd twr aprx 50 AGL NE Thld 10		